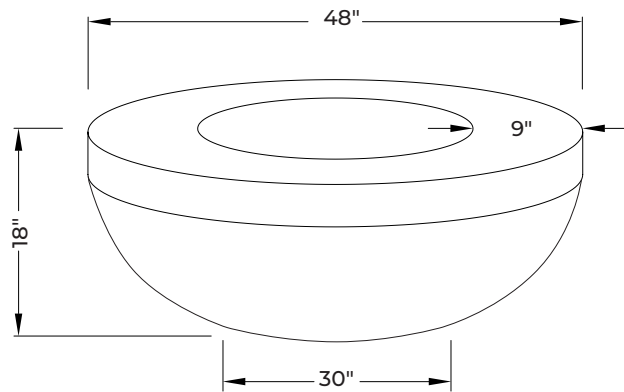


# Aura 48

## REFINED ELEGANCE

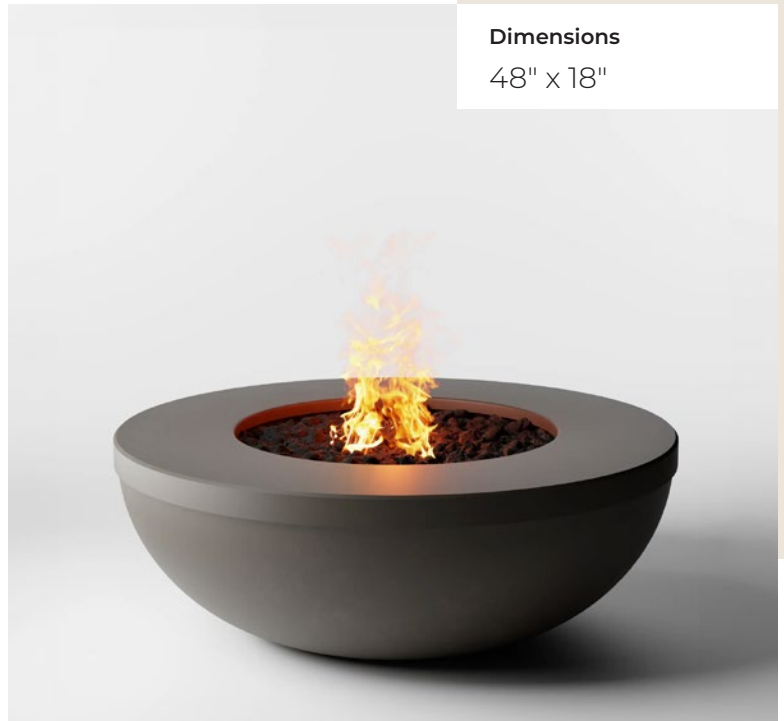
The Aura 48's expansive design and clean lines make it an impressive focal point for larger gatherings. Its sleek concrete finish and captivating flame invite connection and conversation.

**Weight** 450 lbs.



**Dimensions**

48" x 18"



## TECHNICAL DATA

	Manual	Push Button	Electronic Ignition
<b>Standard System</b> (ETL Certified System)	130K BTU NG 110K BTU LP	—	120K BTU NG/LP
<b>Low-Clearance system</b> (CSA/UL Approved Burner assembly)	65K BTU NG/LP	—	140K BTU NG/LP

 For technical information, view the manual  
[www.dreamcastdesign.com](http://www.dreamcastdesign.com)

**DreamCast**  
Design & Production



Please contact us at 1-888-616-4939 with any questions, or email us at [info@dreamcastdesign.com](mailto:info@dreamcastdesign.com)

# Aura 48

All units ship with either NG/LP burner, lava rock topping and water resistant cover.

## TOPPING OPTIONS



RIVER STONES



TUMBLER ROCKS



LOG SETS

## EI ACCESSORIES



TIMER

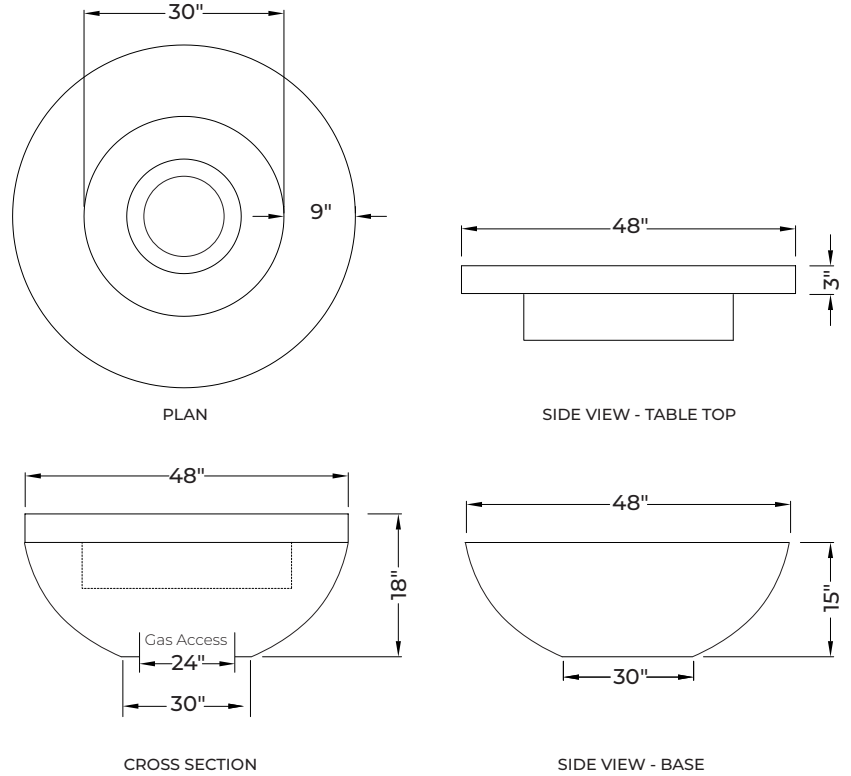


REMOTE



EMERGENCY STOP

To explore more toppings & accessories, visit [www.dreamcastdesign.com](http://www.dreamcastdesign.com)



## Min. and Max. Gas Inlet Pressures

The installer is responsible for using the correct fuel lines and/or regulation to provide gas to the fire feature within the specified minimum and maximum gas inlet pressures.

Refer to installation manual for more details

